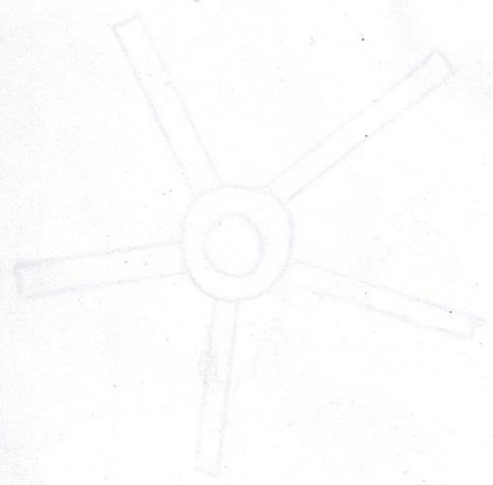
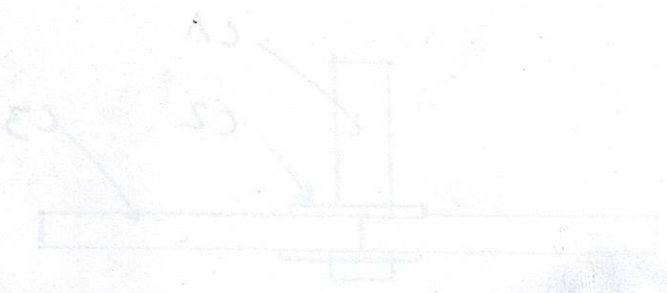
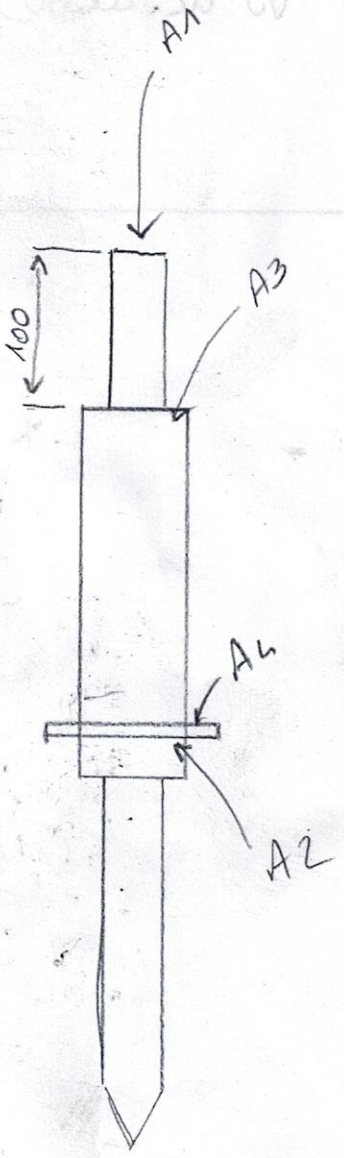
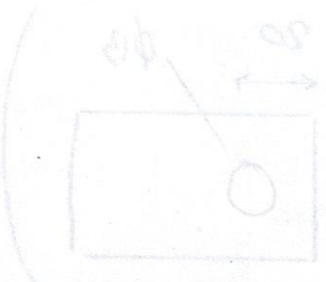
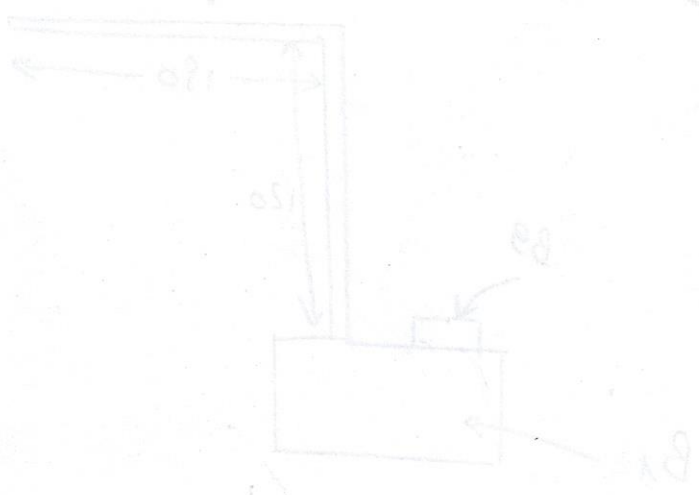


(2)

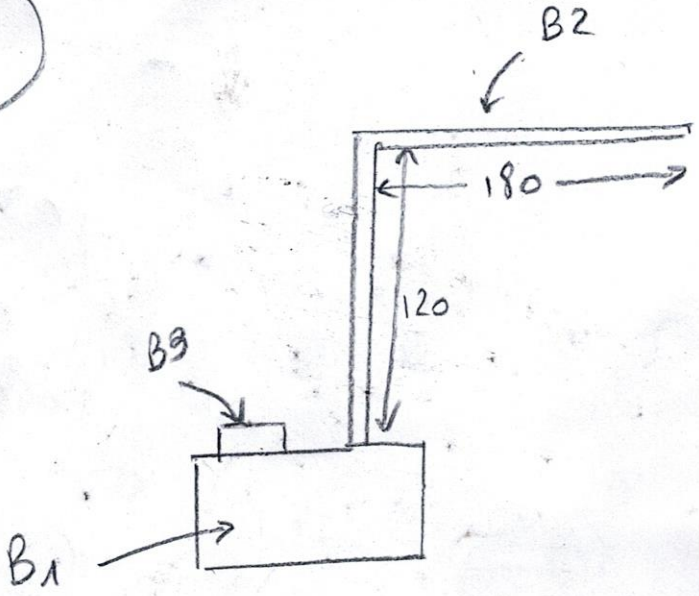
B1 tube carré 32x5 - 100
B2 for carré Ø8 - 300
B3 carré 11/5 part



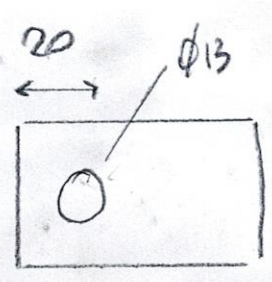
C1 tube carré 32x5
C2 rondelle Ø36
C3 tube carré 32x5

A1	étire rond $\phi 16$	800	1
A2	tube rond 30x2	400	1
A3	rospelle $\phi_{int} 16 \phi_{ext} 26$		2
A4	rondelle $\phi 30$		1

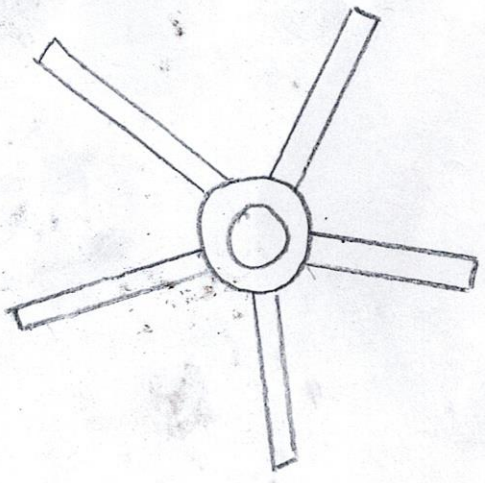
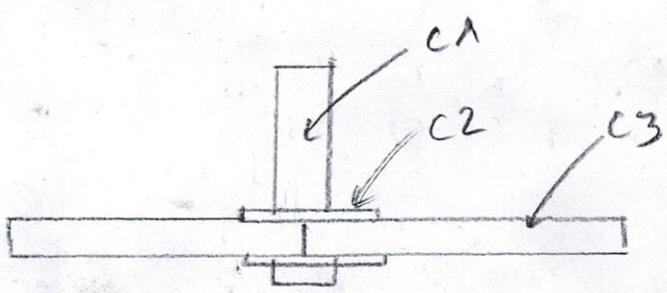
(x5)



- B1 tube carré 35x2 100
- B2 fer rond Ø8 300
- B3 écrou M12 brut



B1
vu de dessus



- C1 tube rond 35x2 200 1
- C2 rondelle Ø36 2
- C3 tube carré 30x2 500 5