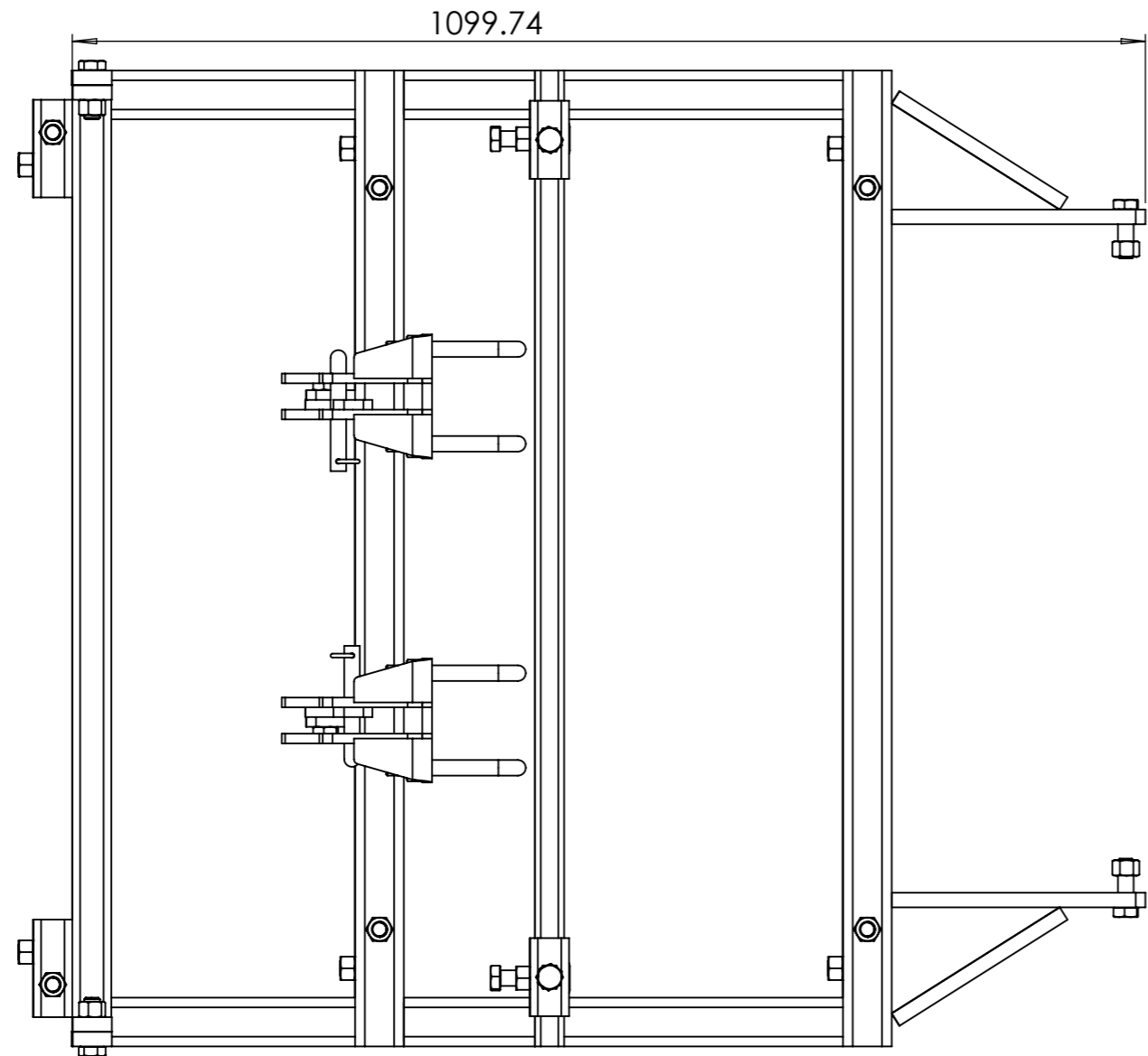
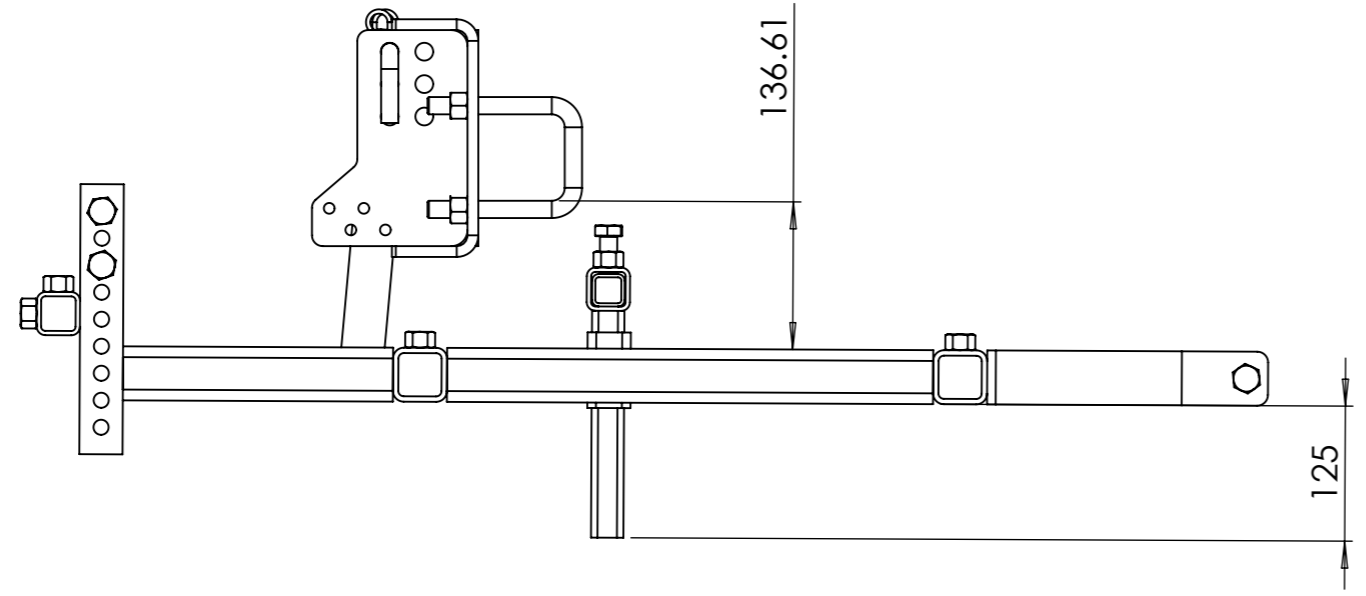

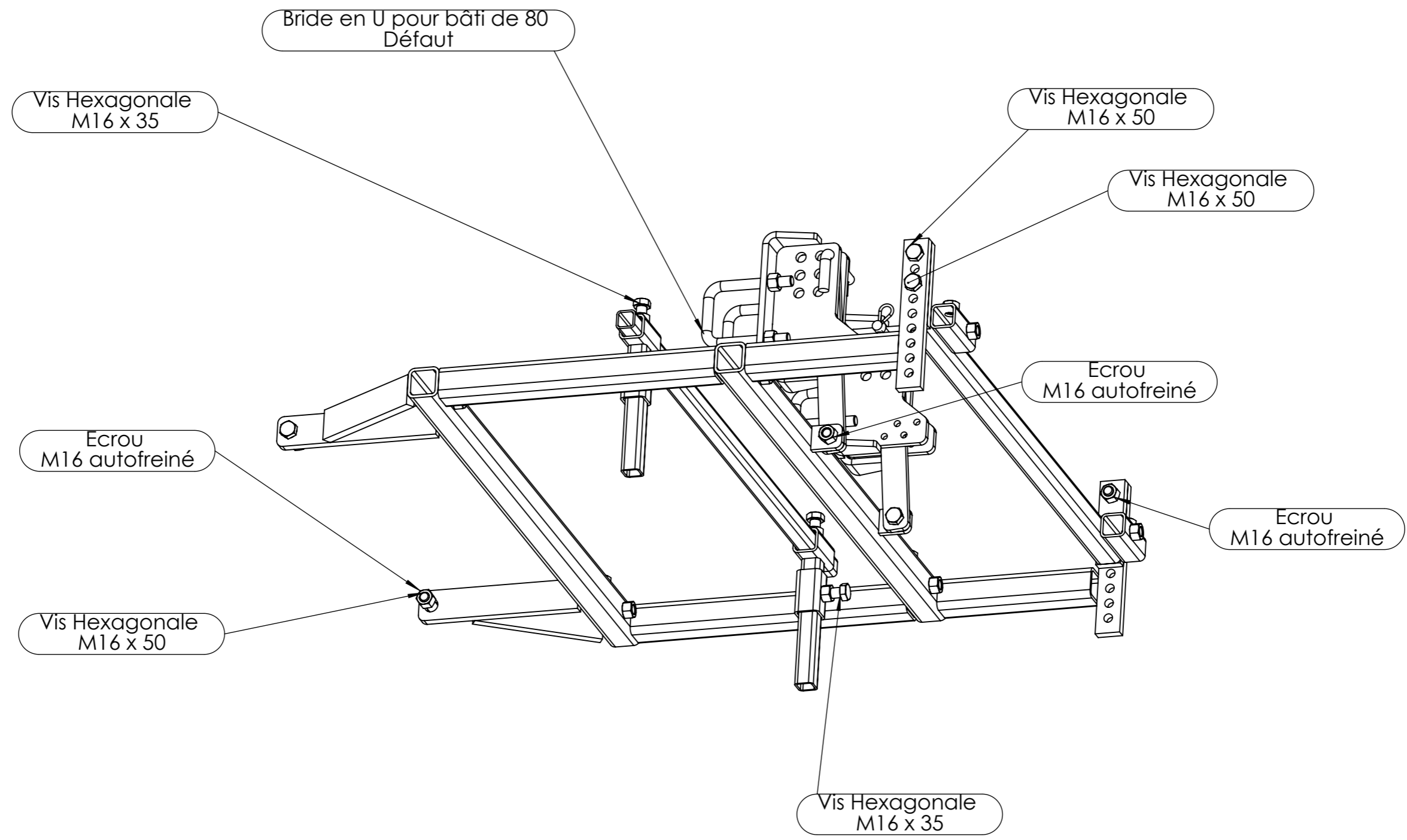


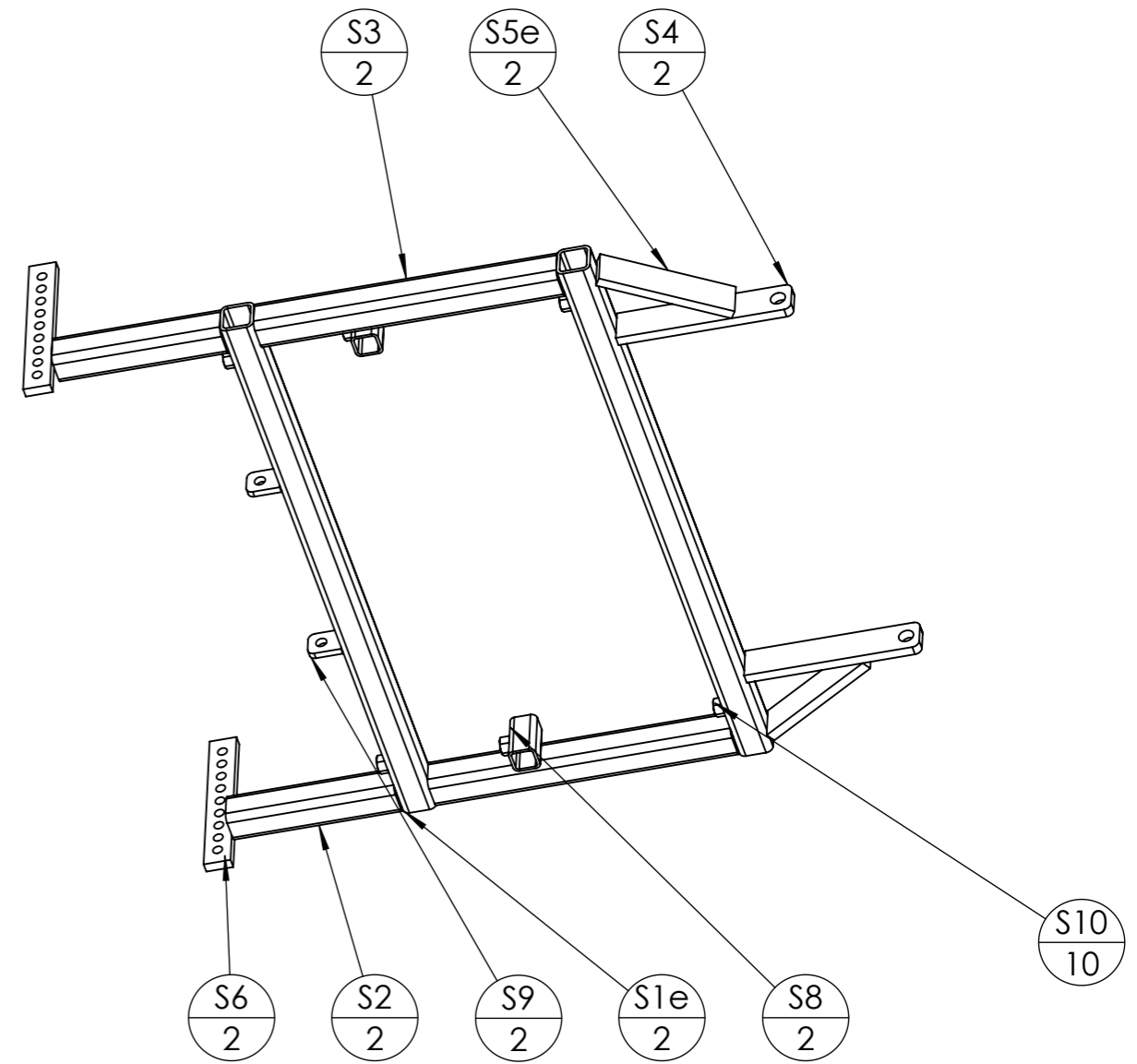
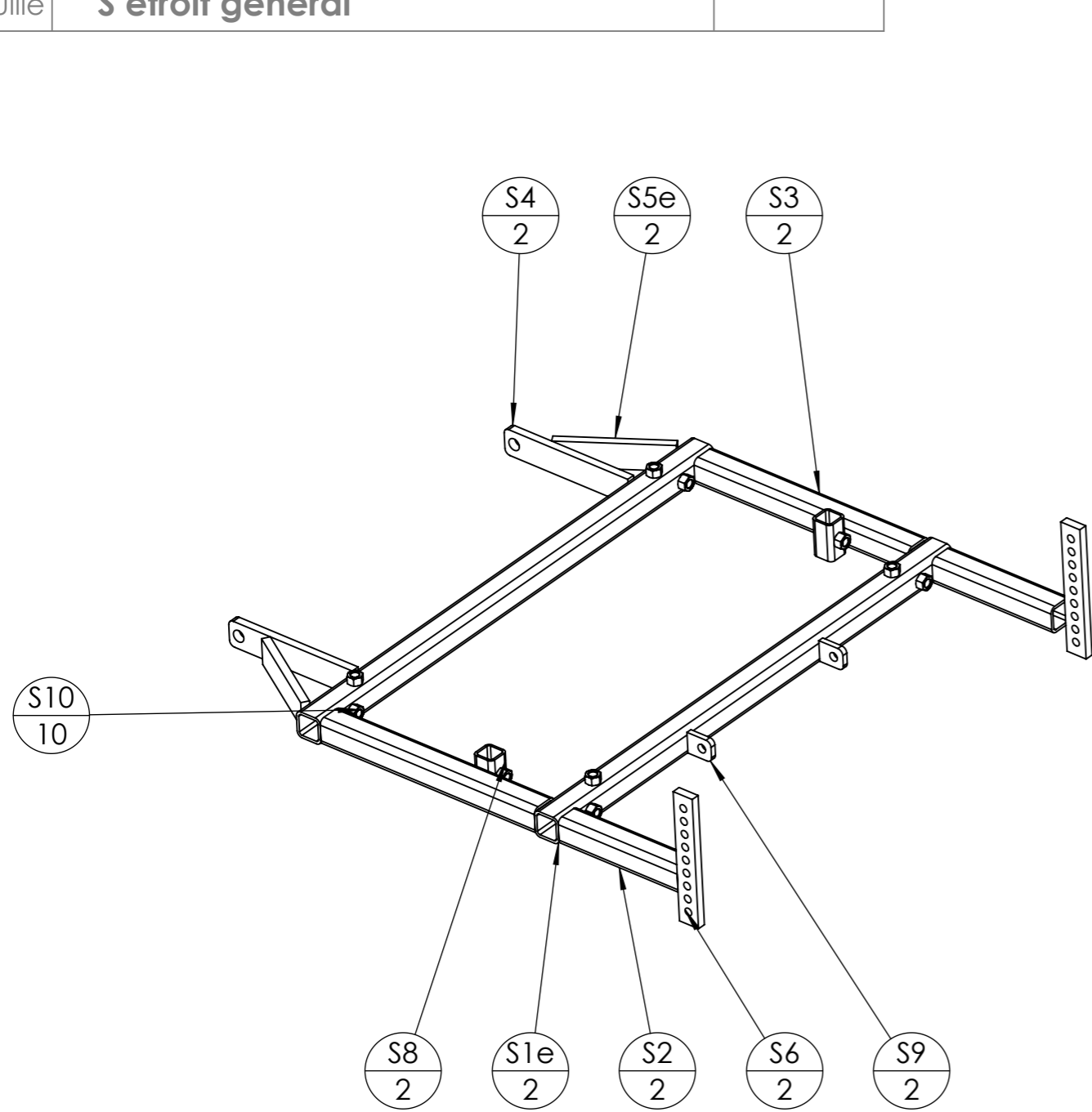
Pièce	Désignation	Qté
S	chassis bas étroit	1
V	barre porte dent	1
X	support barre porte cuillère	2
Y	barre porte cuillère	1
Z	bras support module bas	2
D	Bride viticole	2
Bride en U pour bâti de 80	Bride en U pour bâti de 80	4
Ecrou	Ecrou M16 autofreiné	16
Vis Hexagonale	Vis hexagonale M16 x 35	6
Vis Hexagonale	Vis hexagonale M16 x 50	6
Broche 1 - 16 L100	Broche pliée Ø16 - L100	2
Goupille épingle d'axe, 15x70 Ø4	Goupille épingle d'axe 15x70 Ø4	2

Outil	Cadre ST étroit		
Date	11/01/2023	Version	4.1
Feuille	Vue générale(2)		



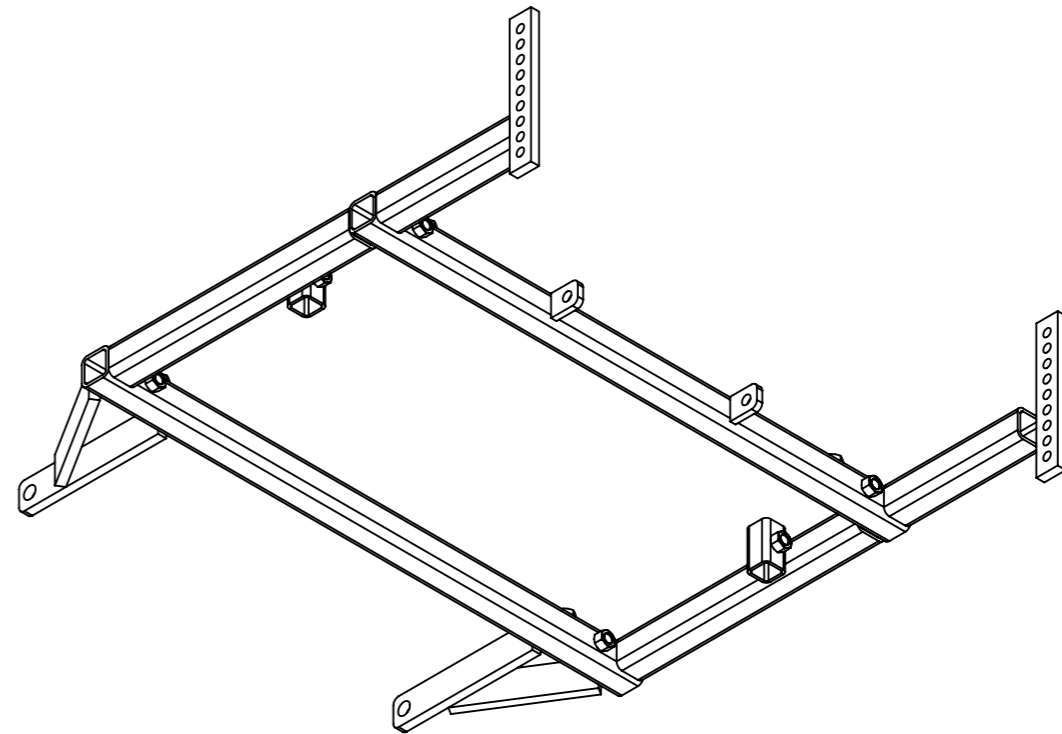
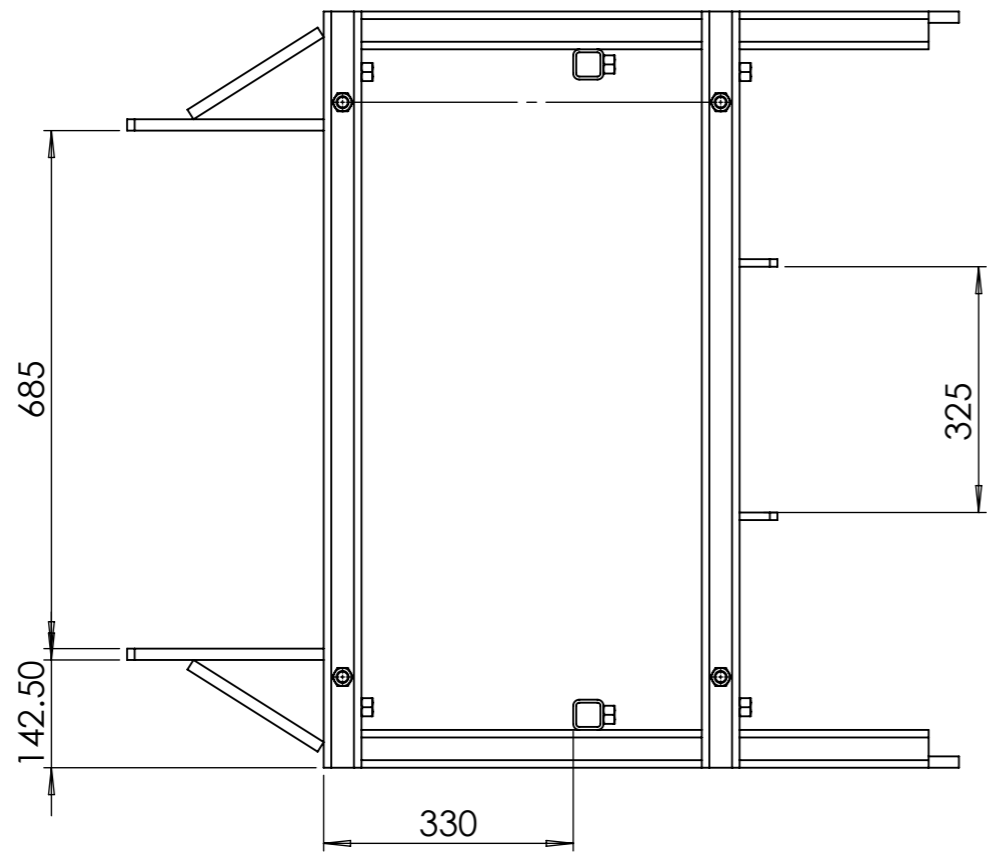
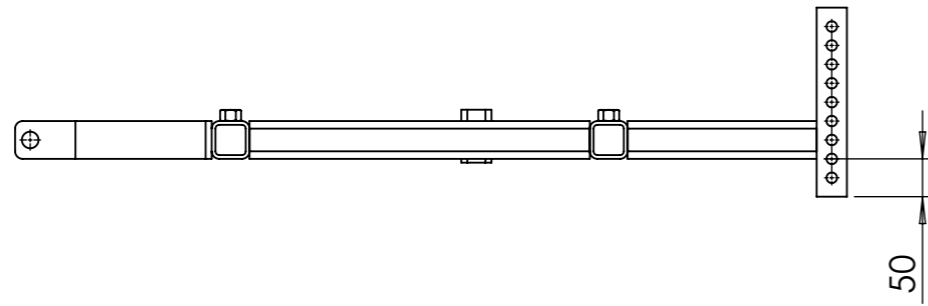
Outil	Cadre ST étroit				
Date	11/01/2023	Version	4.1		page n° 3 / 13
Feuille	Vue générale(3)(2)				

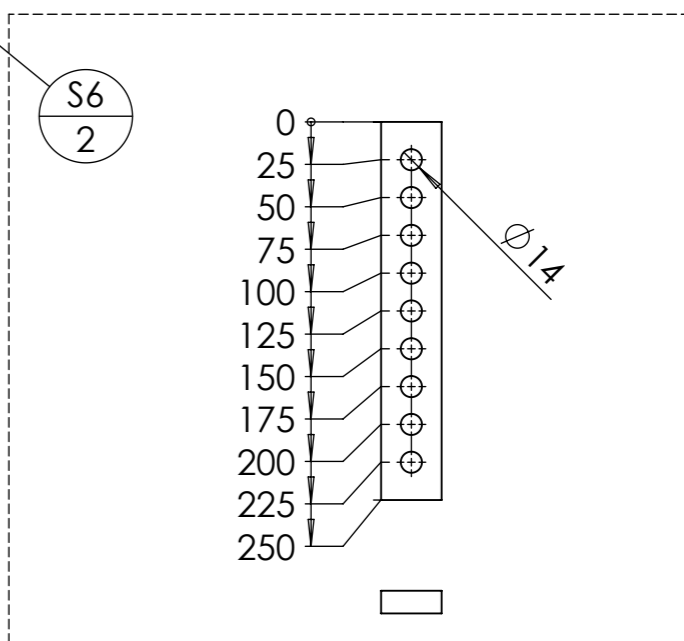
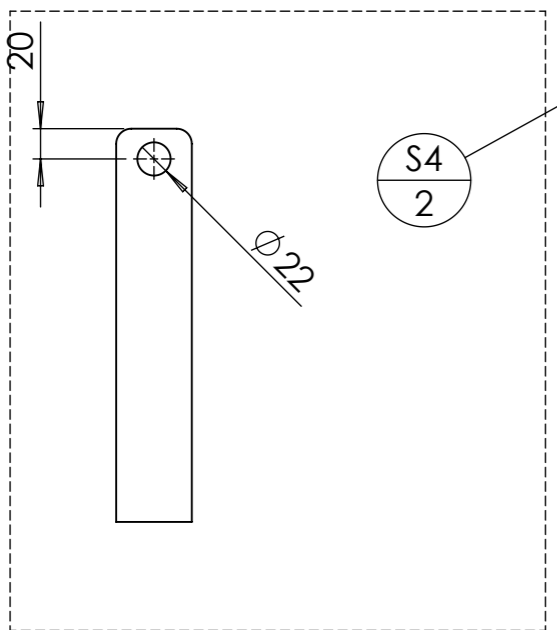
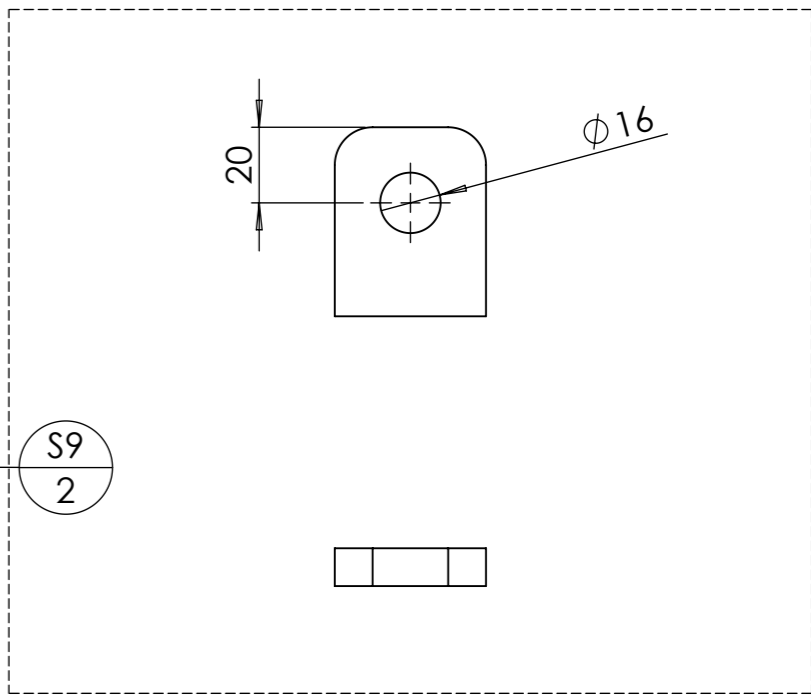
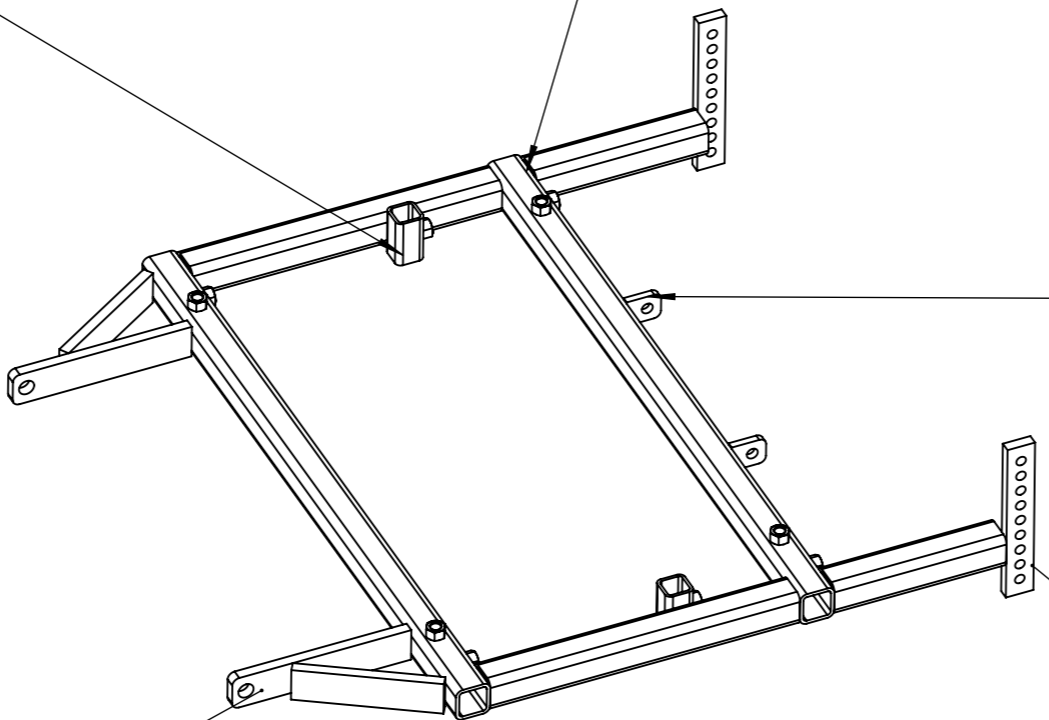
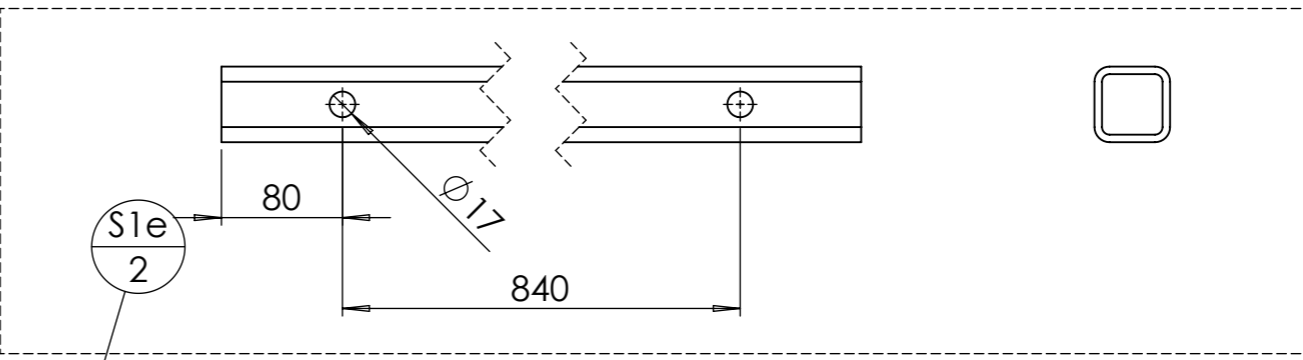
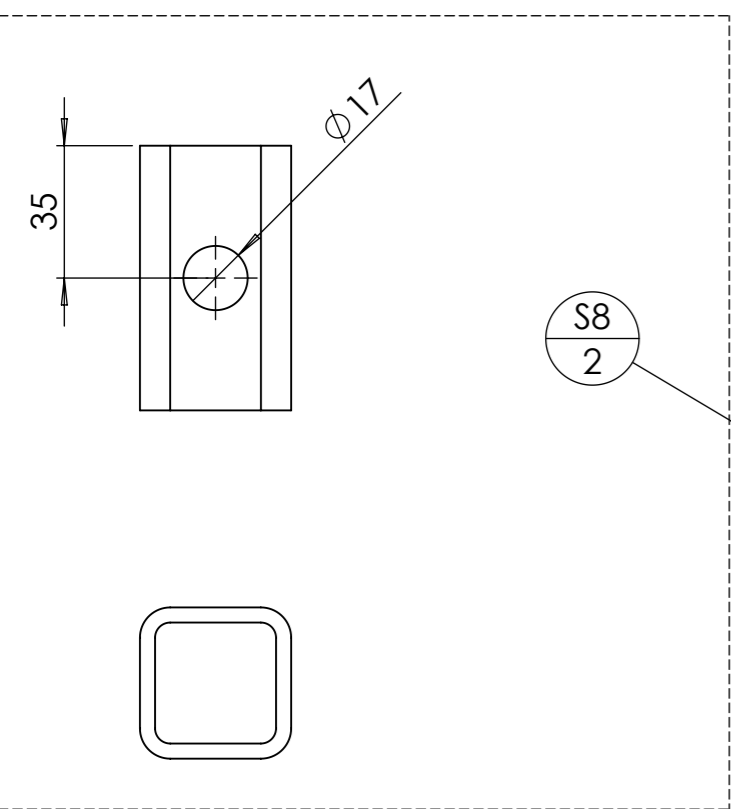




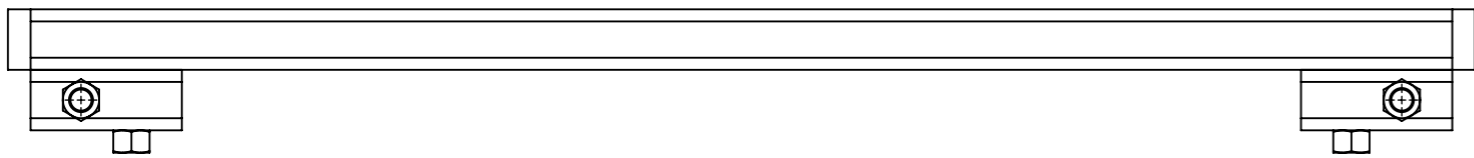
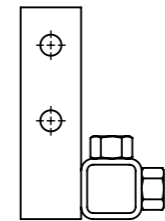
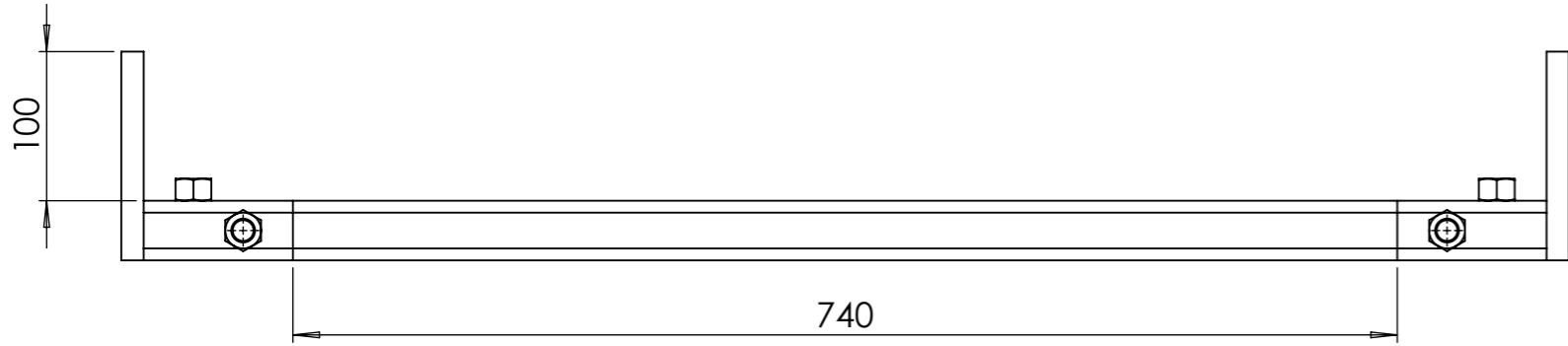
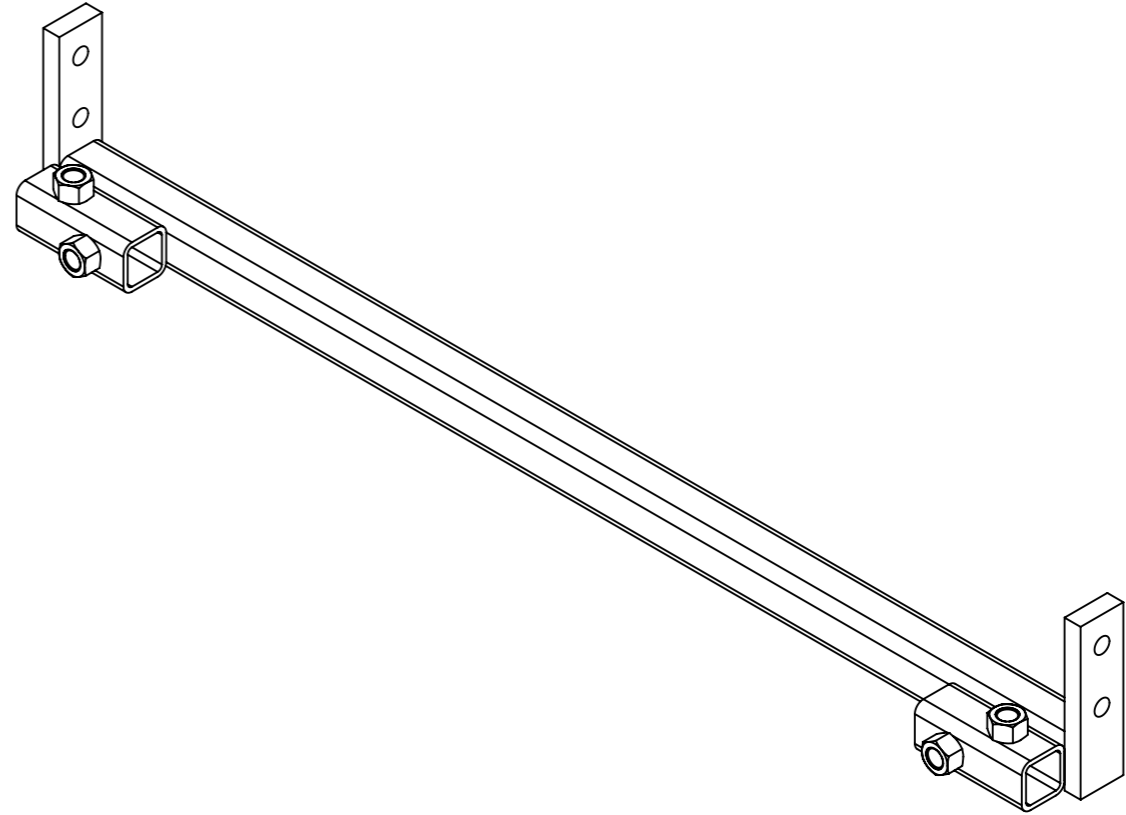
ID	Description	ANGLE1	ANGLE2	p	Longueur	Qté
S1e	tube carré 50 x 5	0.00	0.00	4x Ø17 ;	1000	2
S2	tube carré 50 x 5	0.00	0.00		250	2
S3	tube carré 50 x 5	0.00	0.00		450	2
S4	fer plat 50 x 15	0.00	0.00	1x Ø22 ;	260	2
S5e	fer plat 50 x 15	0.00	0.00		203.5776	2
S6	Fer plat 40 x 15	0.00	0.00	9x Ø14 ;	250	2
S8	tube carré 40 x 4	0.00	0.00	1x Ø17 ;	70	2
S9	Fer plat 40 x 10	0.00	0.00	1x Ø16 ;	50	2
S10	Ecrou M16 brut					10

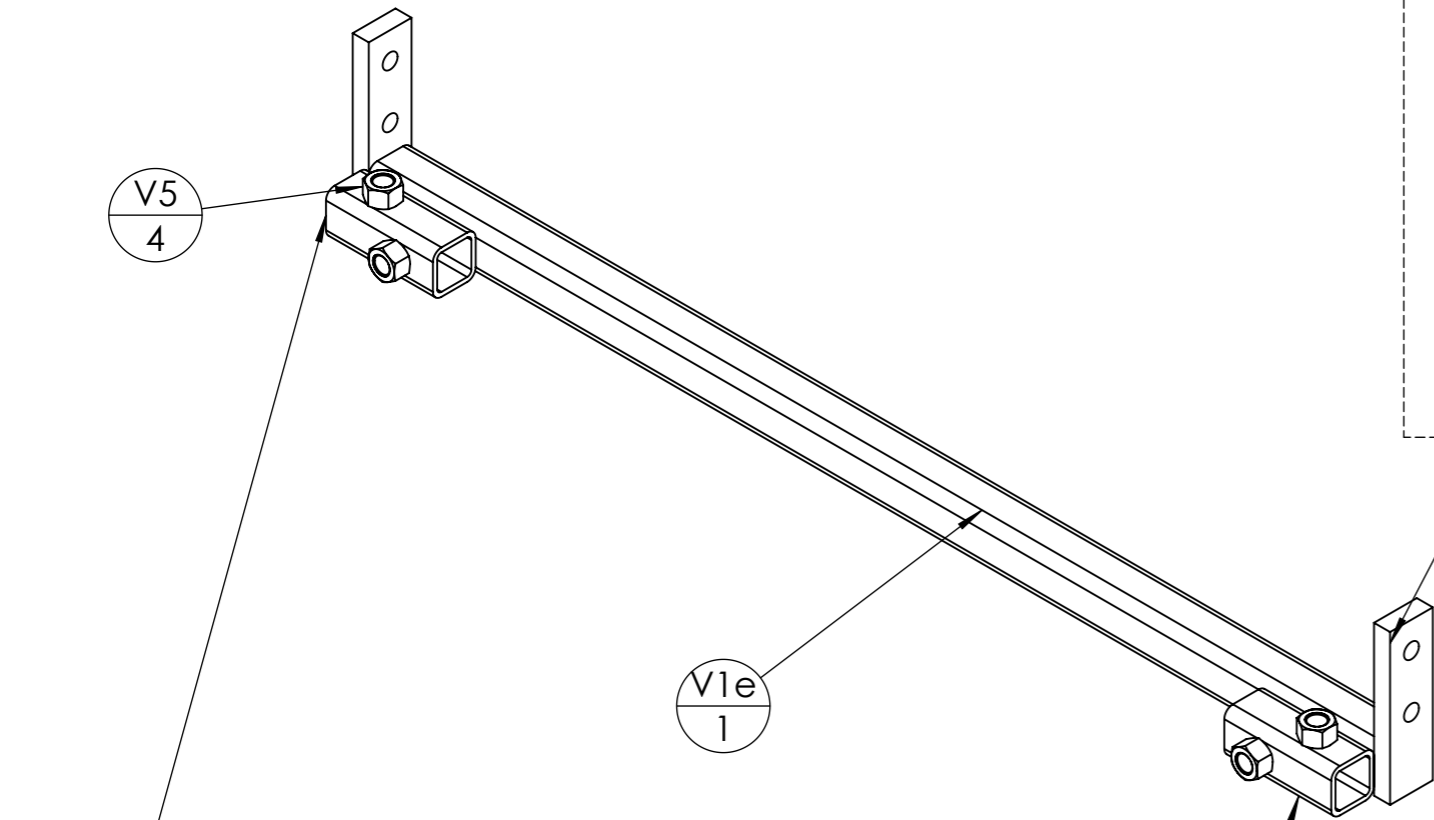
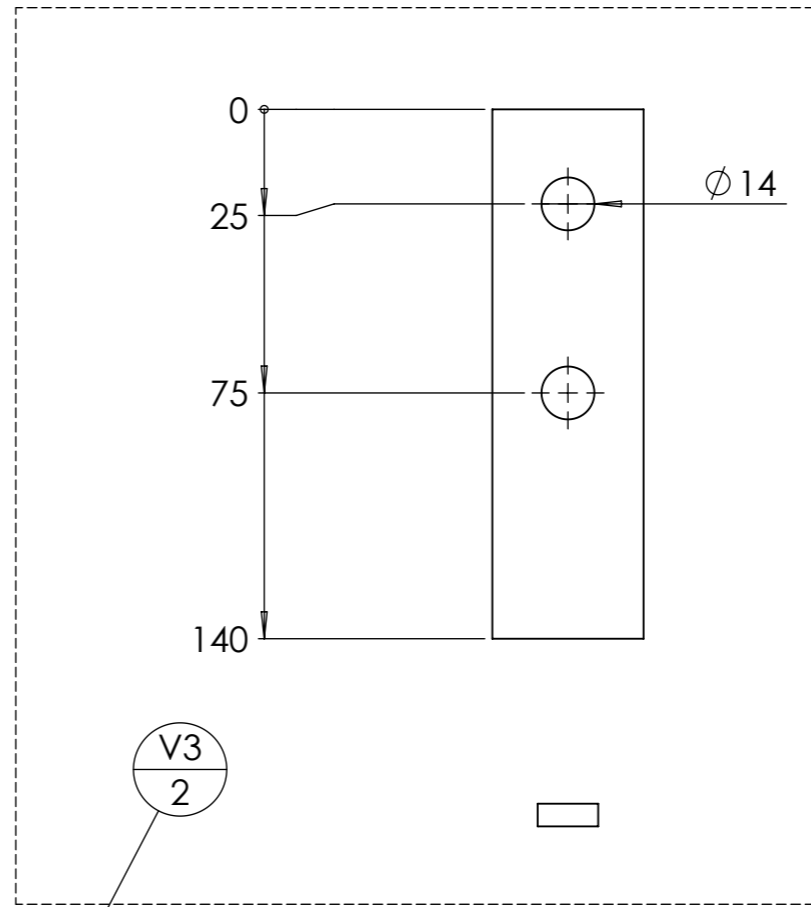
Outil	Cadre ST étroit				
Date	11/01/2023	Version	4.1		page n° 5 / 13
Feuille	S étroit position				



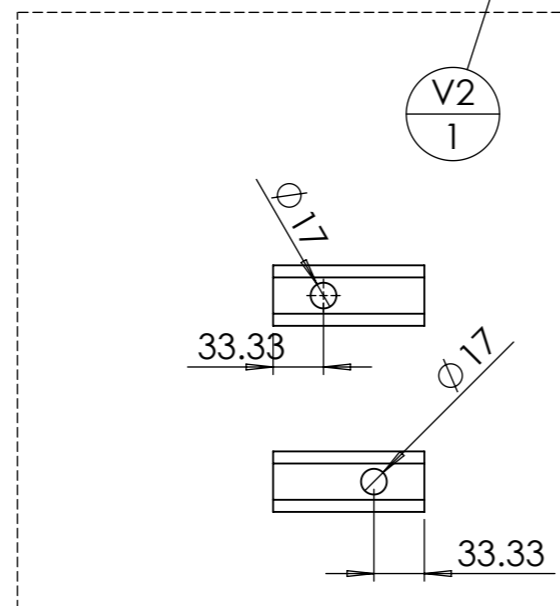
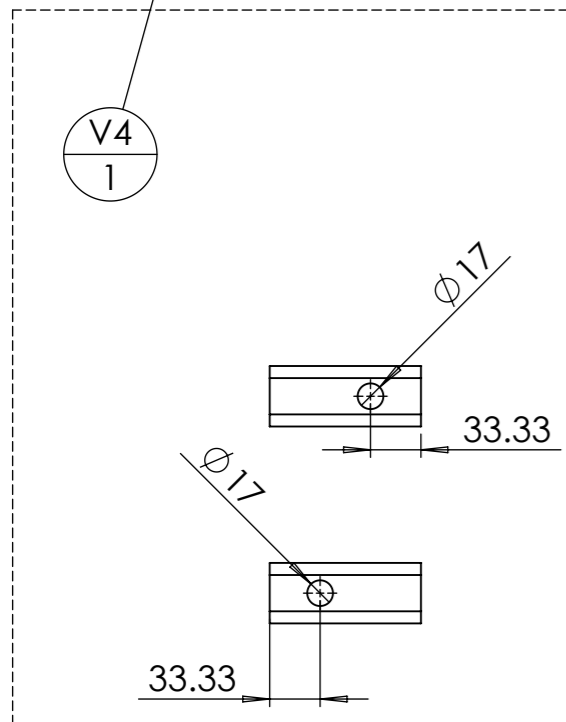


Outil	Cadre ST étroit				
Date	11/01/2023	Version	4.1		page n° 7 / 13
Feuille	V étroit position				



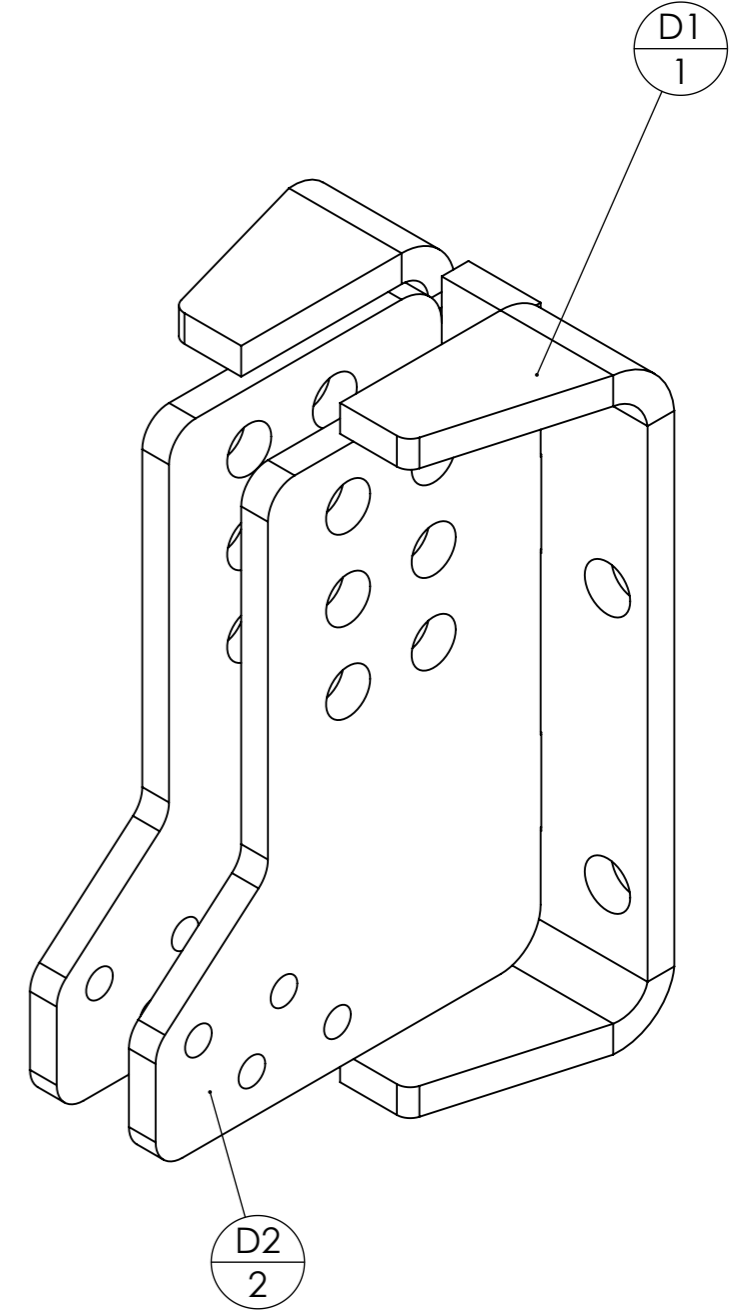
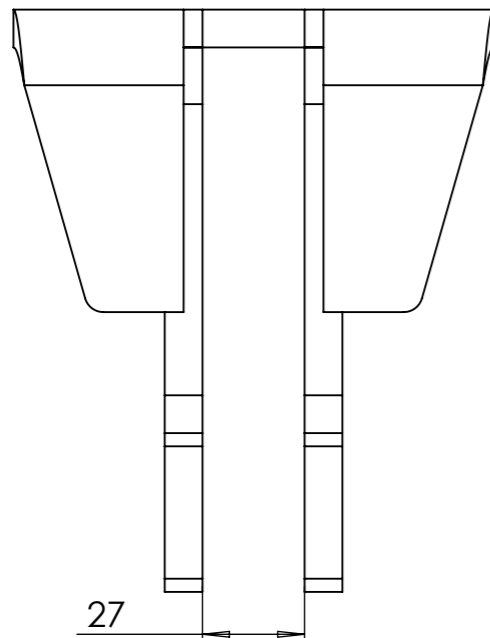
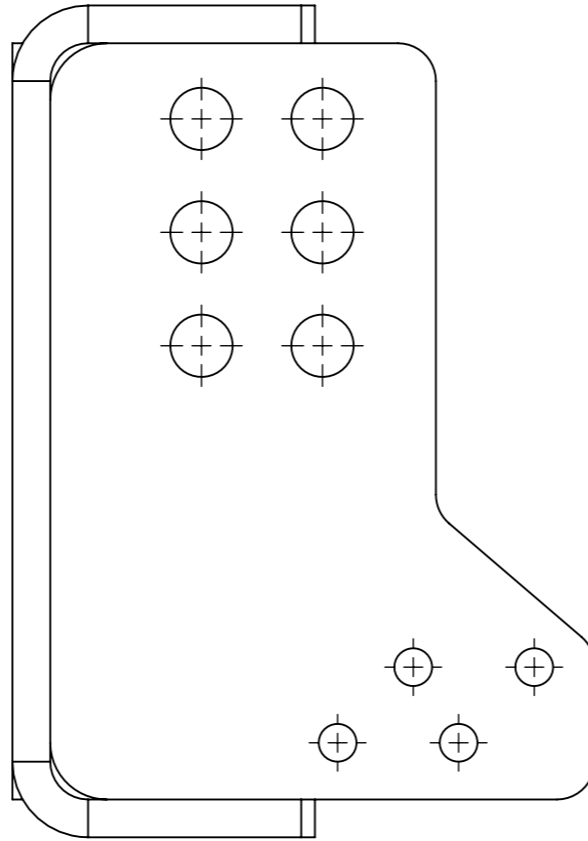
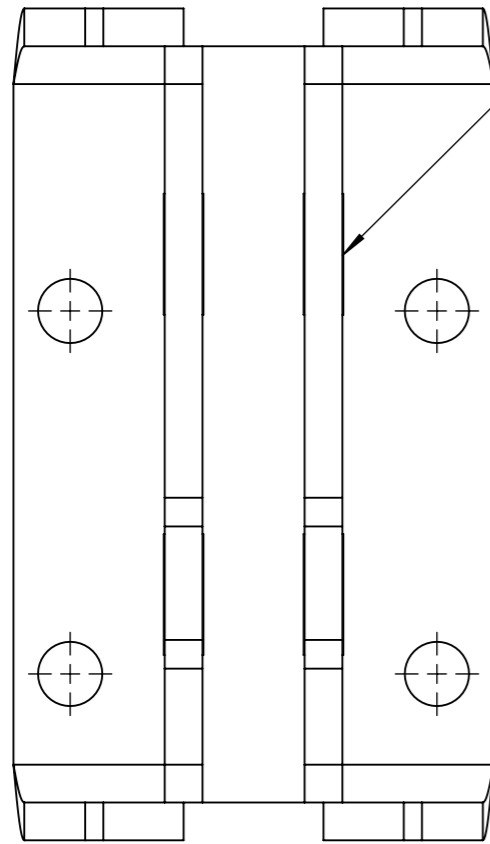


V4/1 et V2/1 symétriques

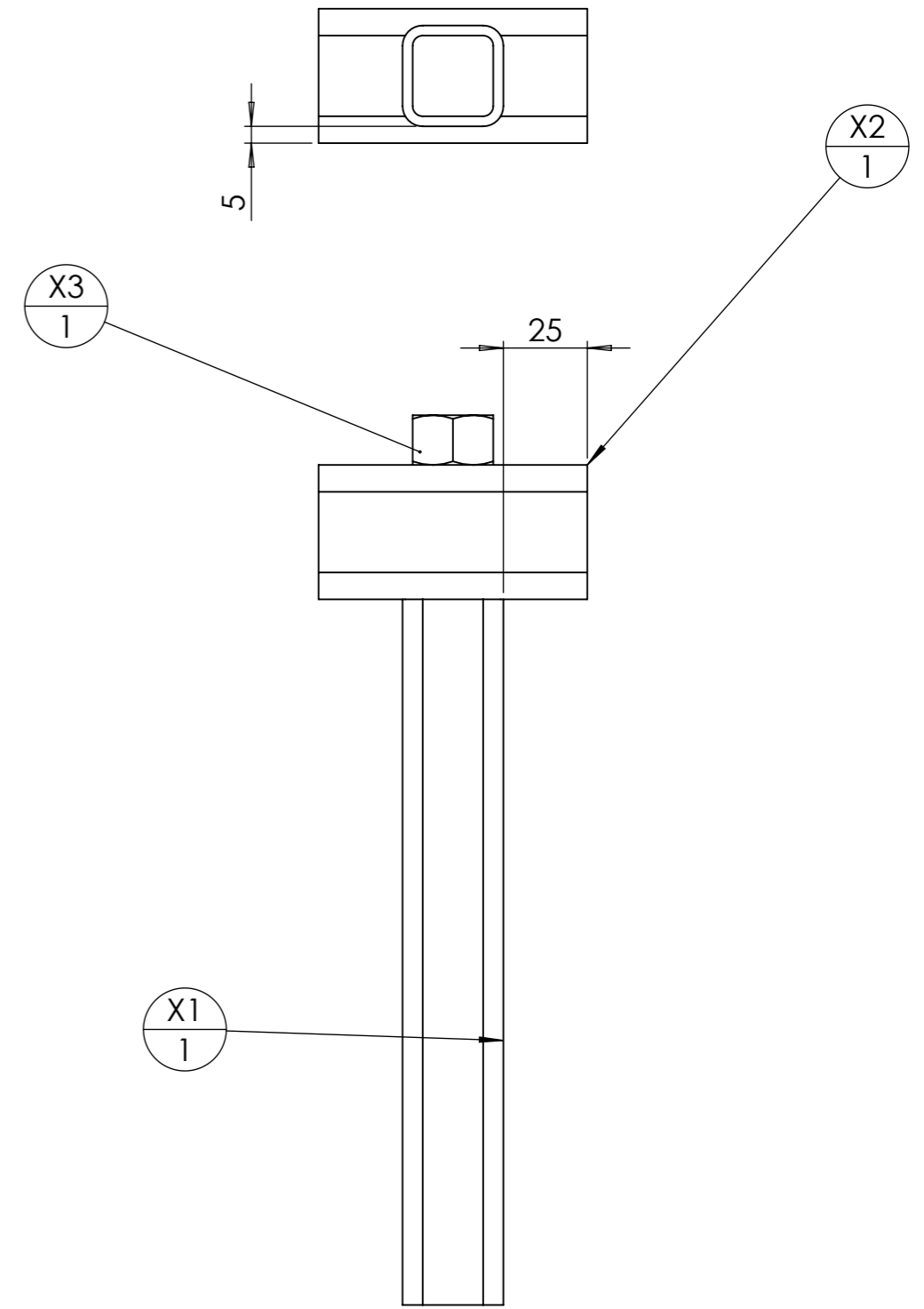
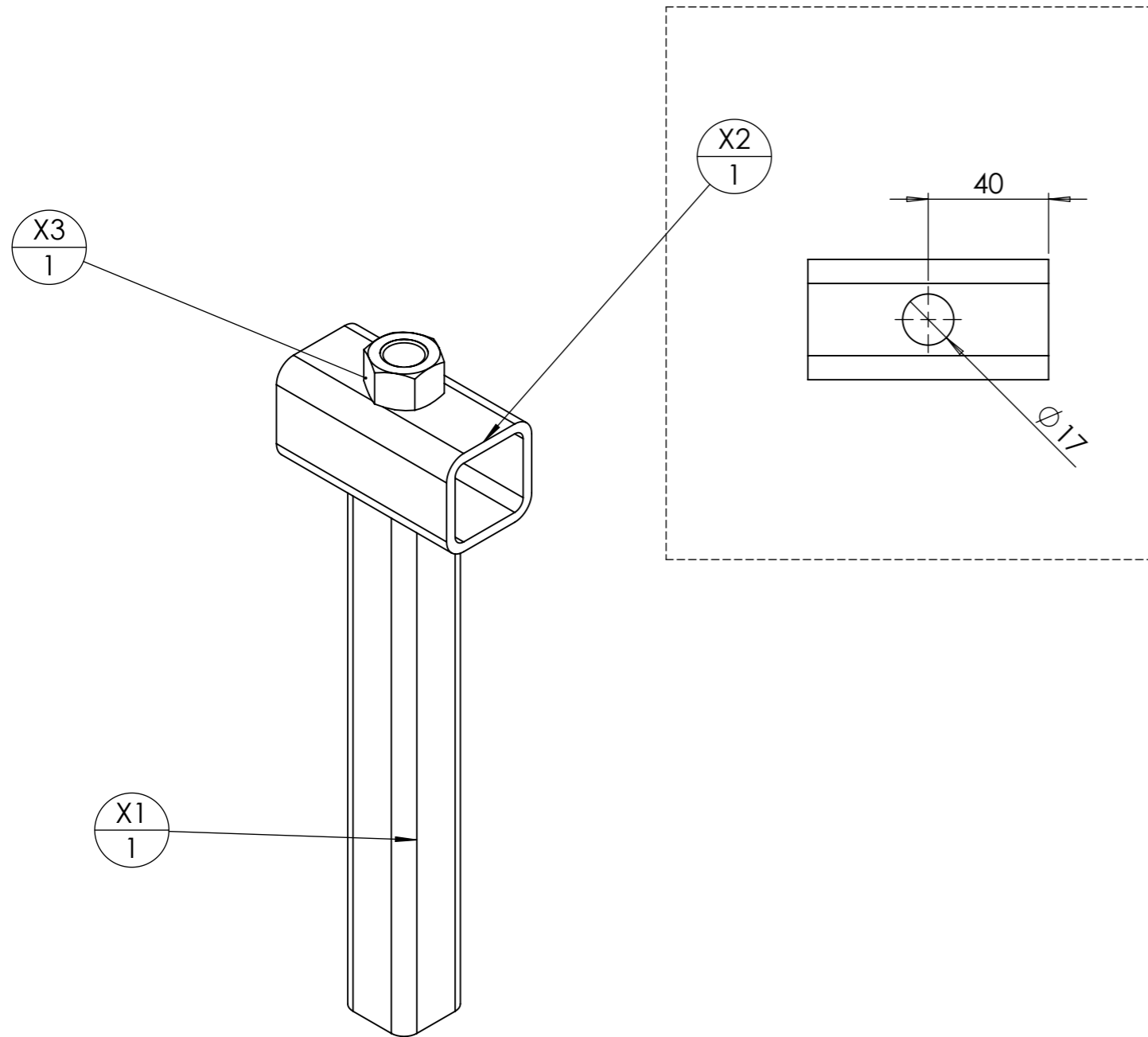


ID	Description	ANGLE1	ANGLE2	p	Longueur	Qté
V1e	tube carré 40 x 4	0.00	0.00		940	1
V2	tube carré 40 x 4	0.00	0.00	2x Ø17 ;	100	1
V3	Fer plat 40 x 15	0.00	0.00	2x Ø14 ;	140	2
V4	tube carré 40 x 4	0.00	0.00	2x Ø17 ;	100	1
V5	Ecrou M16 brut					4

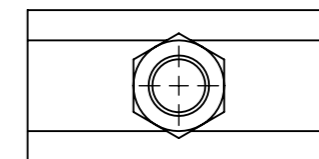
Des tenons-mortaises facilitent l'assemblage.



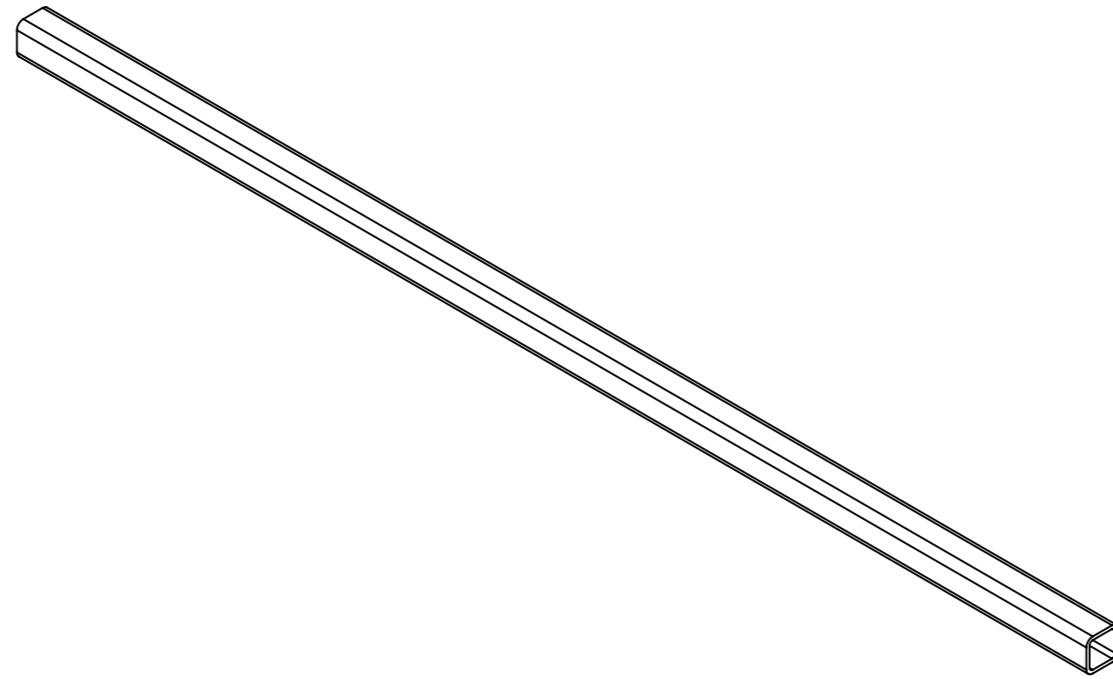
ID	Description	Qté
D1	châpe de fixation sur bâti de 80	1
D2	châpe mobile pour dent de semoir	2



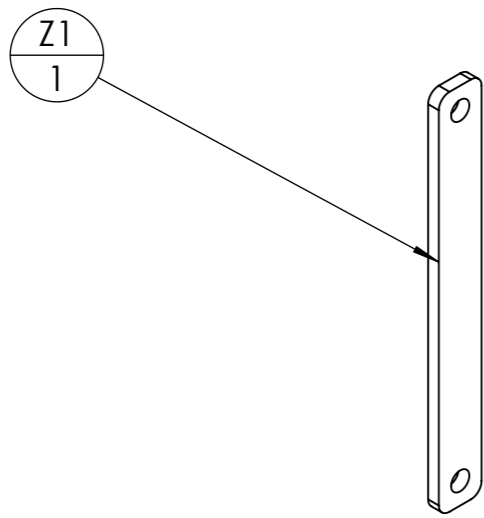
ID	Description	ANGLE1	ANGLE2	p	Longueur	Qté
X1	tube carré 30 x 3	0.00	0.00		210	1
X2	tube carré 40 x 4	0.00	0.00	1x Ø17 ;	80	1
X3	Ecrou M16 brut					1



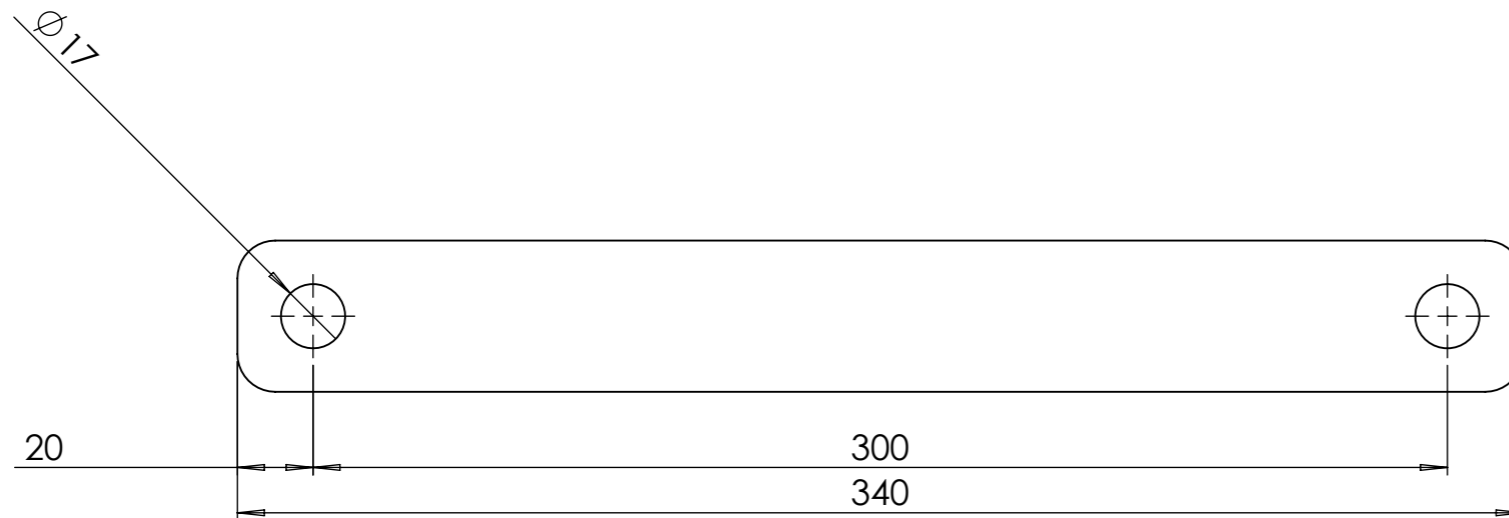
Outil	Cadre ST étroit				
Date	11/01/2023	Version	4.1		page n° 11 / 13
Feuille	Y				




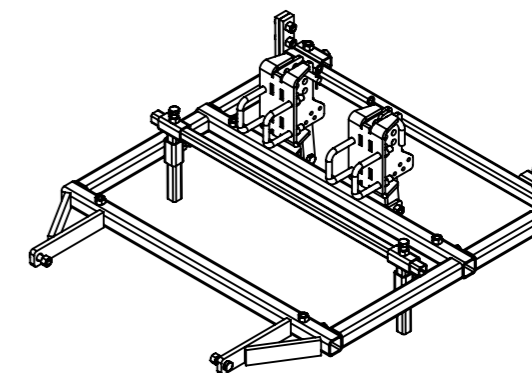
ID	Description	ANGLE1	ANGLE2	P	Longueur	Qté
Y1e	tube carré 30 x 3	0.00	0.00		1000	1



ID	Description	ANGLE1	ANGLE2	p	Longueur	Qté
Z1	Fer plat 40 x 10	0.00	0.00	2x Ø17 ;	340	1



Outil	Cadre ST étroit				
Date	11/01/2023	Version	4.1		page n° 13 / 13
Feuille	Fournitures				



repère	Désignation	ANGLE1	ANGLE2	p	LONGUEUR	Quantité
Vis Hexagonale	Vis hexagonale M16 x 35					6
Ecrou	Ecrou M16 autofreiné					16
Vis Hexagonale	Vis hexagonale M16 x 50					6
Broche 1 - 16 L100	étiré rond Ø16	0.00	0.00	5	175.13	2
Goupille épingle d'axe, 15x70 Ø4	Goupille épingle d'axe 15x70 Ø4					2
D1	châpe de fixation sur bâti de 80					2
D2	châpe mobile pour dent de semoir					4
Bride en U pour bâti de 80	Bride en U pour bâti de 80					4
Z1	Fer plat 40 x 10	0.00	0.00	2x Ø17 ;	340	2
Y1e	tube carré 30 x 3	0.00	0.00		1000	1
X1	tube carré 30 x 3	0.00	0.00		210	2
X2	tube carré 40 x 4	0.00	0.00	1x Ø17 ;	80	2
X3	Ecrou M16 brut					2
V1e	tube carré 40 x 4	0.00	0.00		940	1
V2	tube carré 40 x 4	0.00	0.00	2x Ø17 ;	100	1
V3	Fer plat 40 x 15	0.00	0.00	2x Ø14 ;	140	2
V4	tube carré 40 x 4	0.00	0.00	2x Ø17 ;	100	1
S10	Ecrou M16 brut					10
S1e	tube carré 50 x 5	0.00	0.00	4x Ø17 ;	1000	2
S2	tube carré 50 x 5	0.00	0.00		250	2
S3	tube carré 50 x 5	0.00	0.00		450	2
S4	fer plat 50 x 15	0.00	0.00	1x Ø22 ;	260	2
S5e	fer plat 50 x 15	0.00	0.00		203.5776	2
S6	Fer plat 40 x 15	0.00	0.00	9x Ø14 ;	250	2
S8	tube carré 40 x 4	0.00	0.00	1x Ø17 ;	70	2
S9	Fer plat 40 x 10	0.00	0.00	1x Ø16 ;	50	2
V5	Ecrou M16 brut					4