
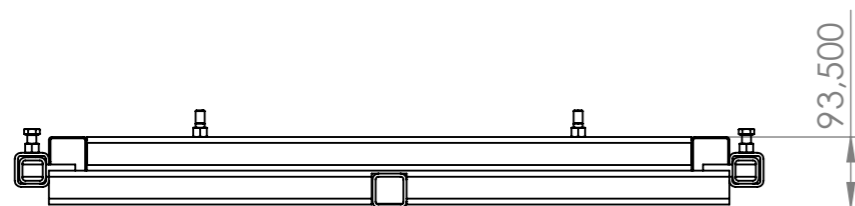
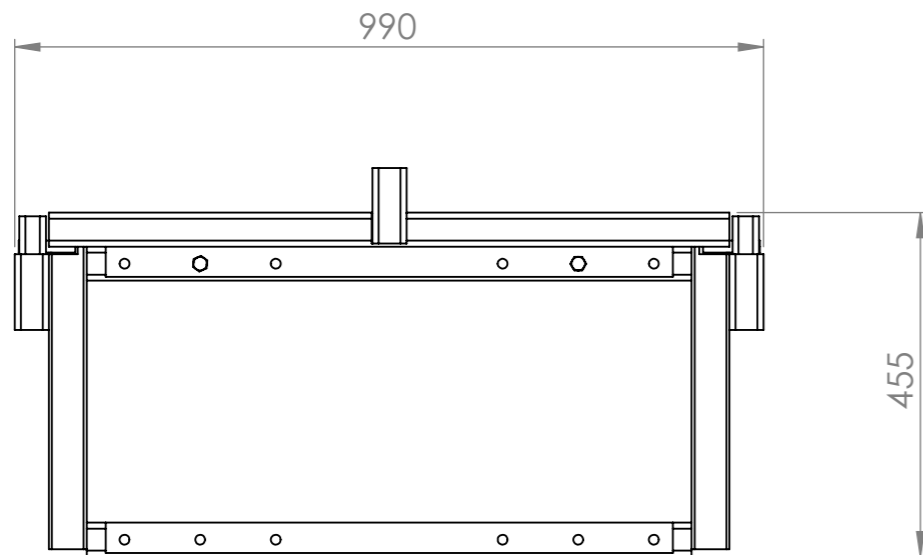
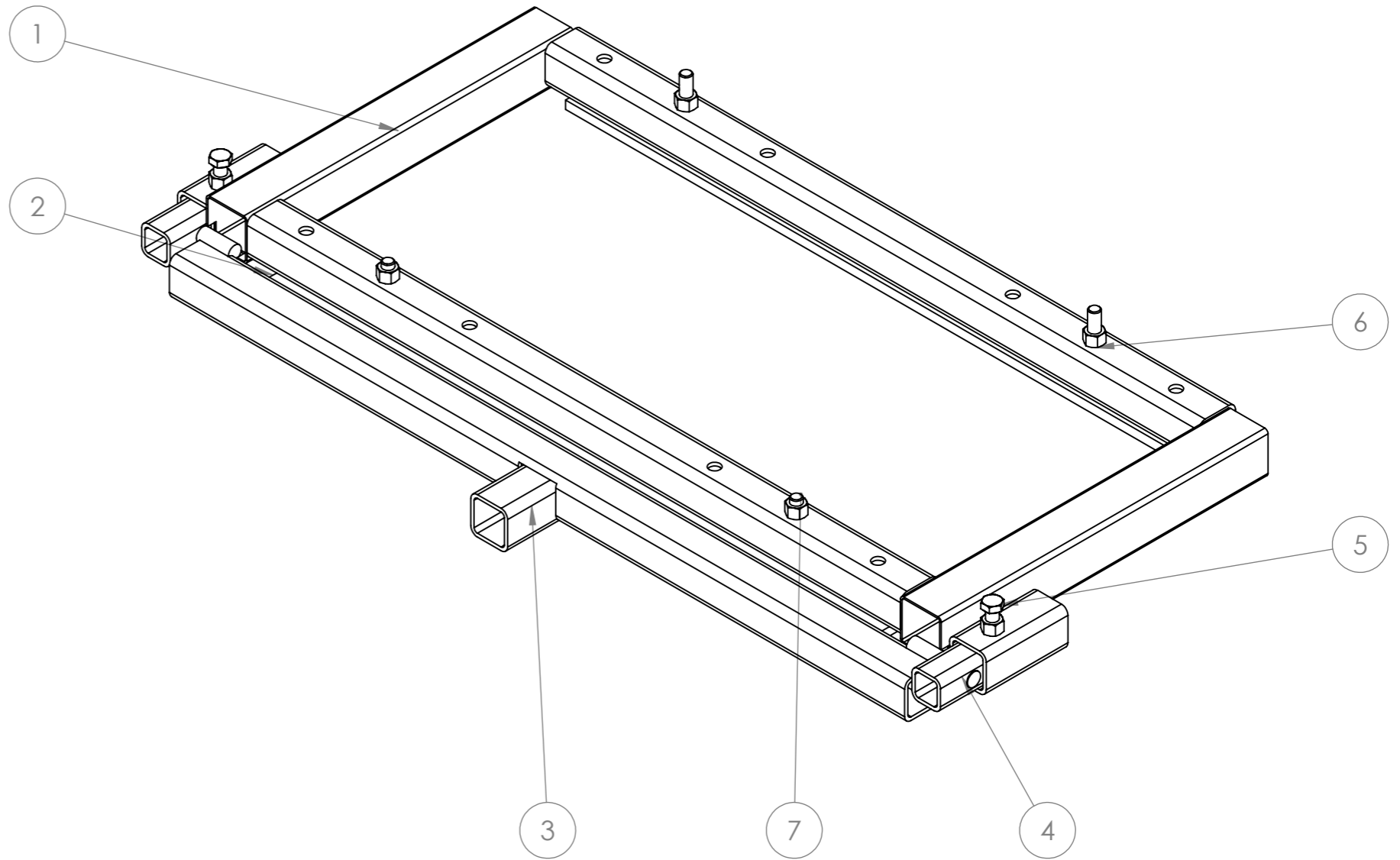



Version	1.2	Qté	1	
Date	21/05/2015			
Outil	Plieuse			
Pièce	Nomenclature générale			

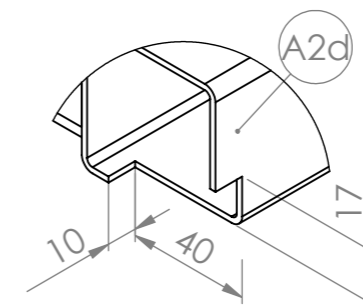
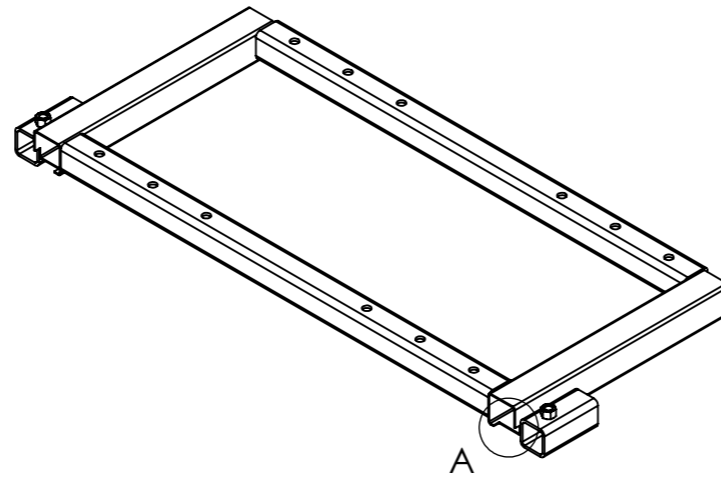


N°	Désignation	Qté
1	A - Châssis	1
2	B - Serrage tôle	2
3	C - Levier de pliage	1
4	D - Support pivot pliage	2
5	Vis hexagonale M12 x 30	2
6	Ecrou M12	4
7	Vis hexagonale M12 x 80	4

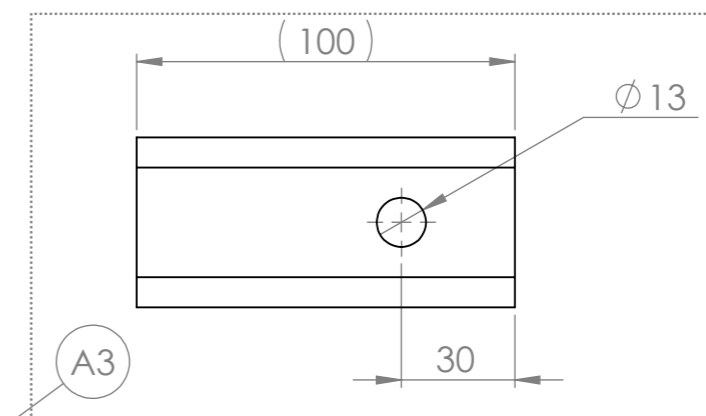
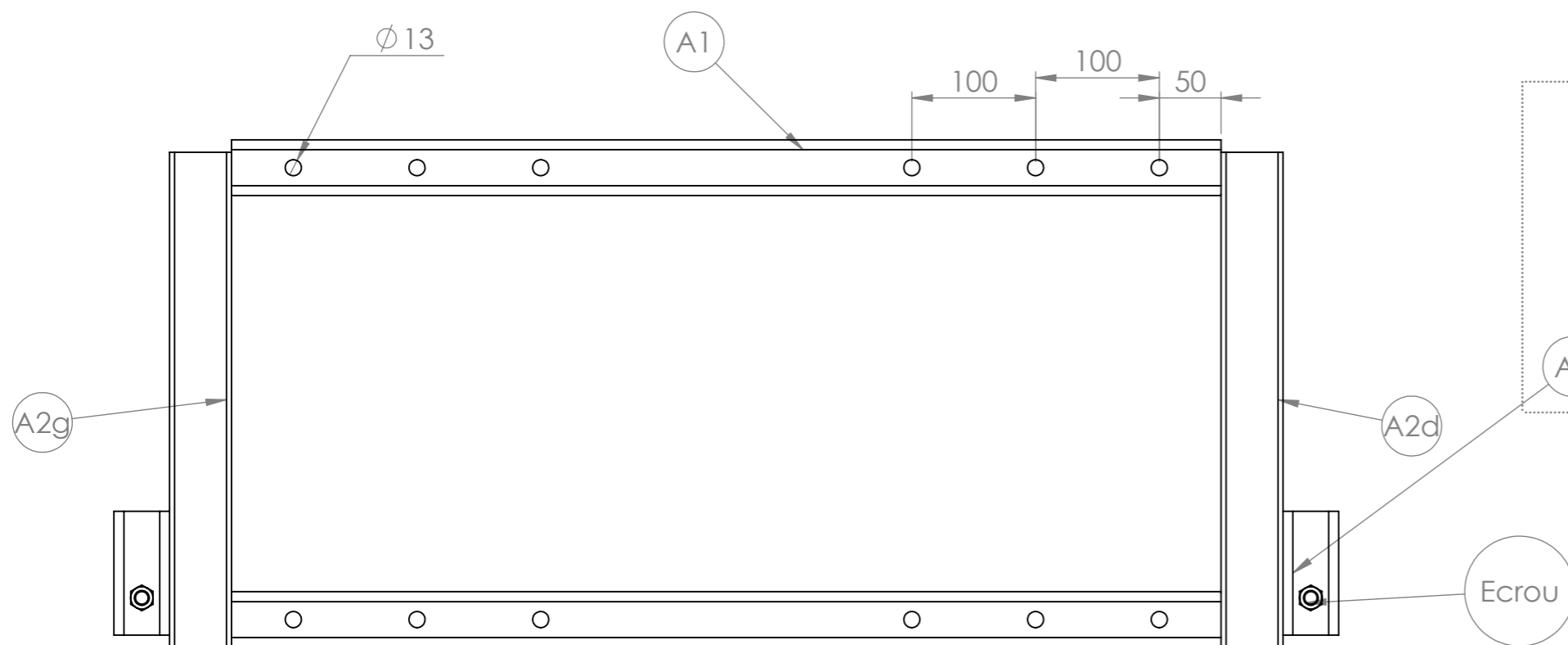
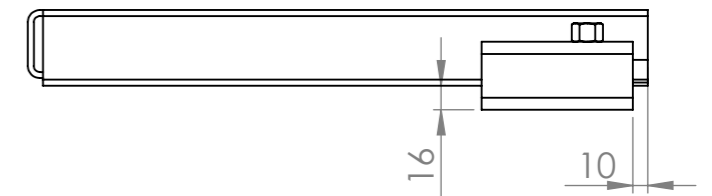
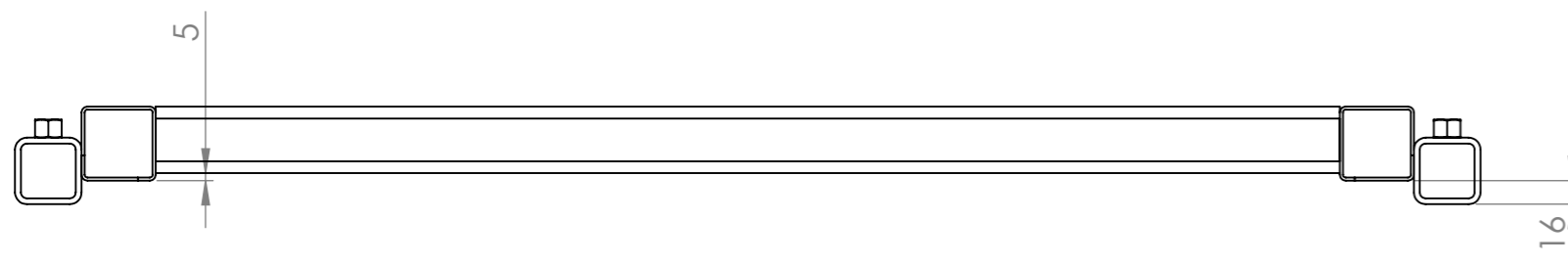
Version	1.2	Qté	1	
Date	21/05/2015			
Outil	Plieuse			
Pièce	Nomenclature générale			




**Attention :** A2g et A2d sont symétriques, la coupe du détail A est donc différente sur les 2 pièces

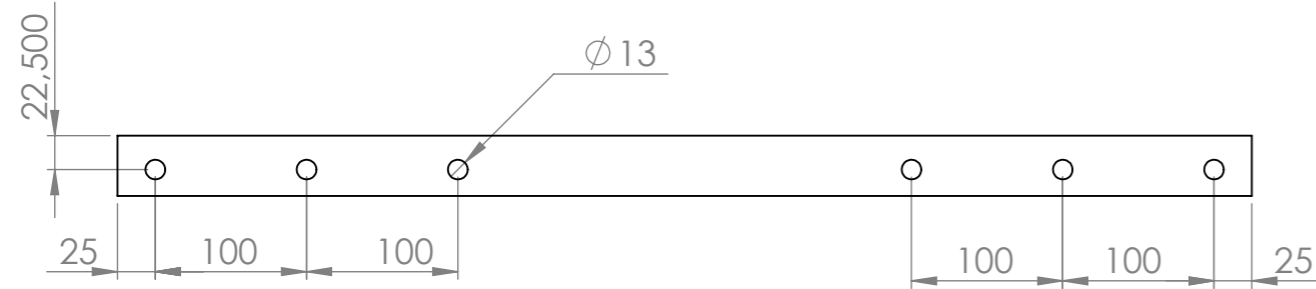
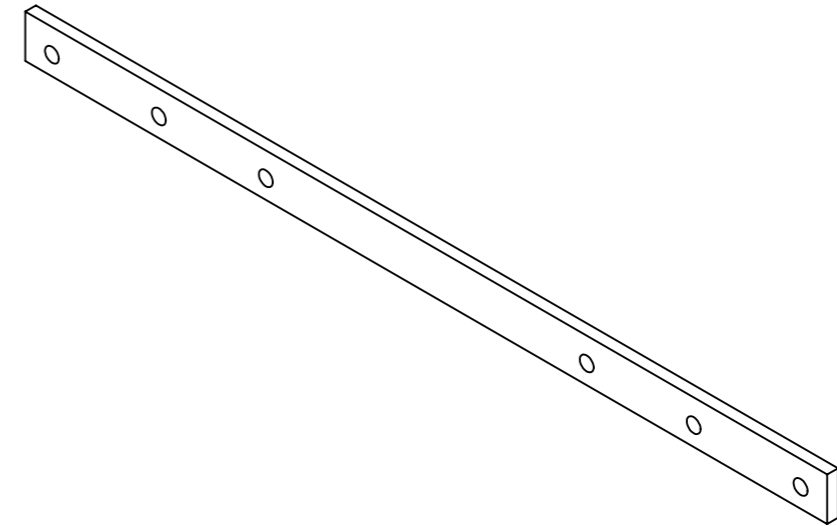


DÉTAIL A  
ECHELLE 1 : 2

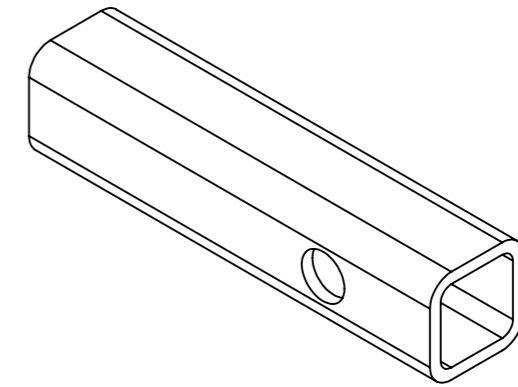
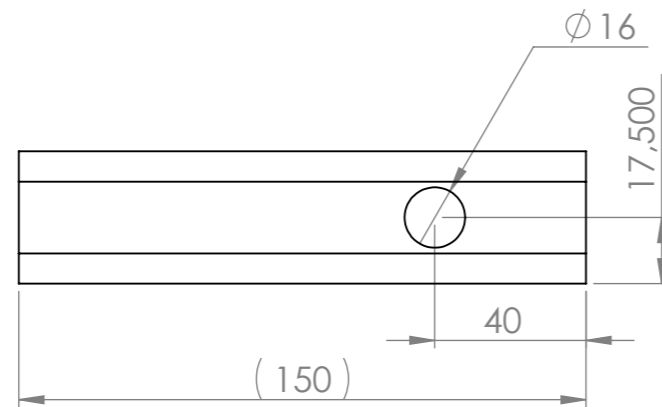


N°	Désignation	Longueur	Qté
A1	tube carré 45 x 4	800	2
A2g	tube carré 50 x 2	400	1
A2d	tube carré 50 x 2	400	1
A3	tube carré 45 x 4	100	2
Ecrou	Ecrou M12		2


Version	1.2	Qté	1	
Date	21/05/2015			
Outil	Plieuse			
Pièce	B - D			

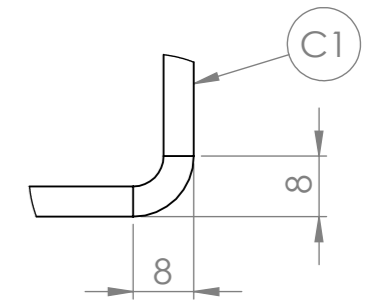
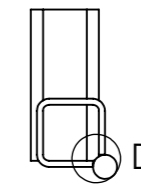
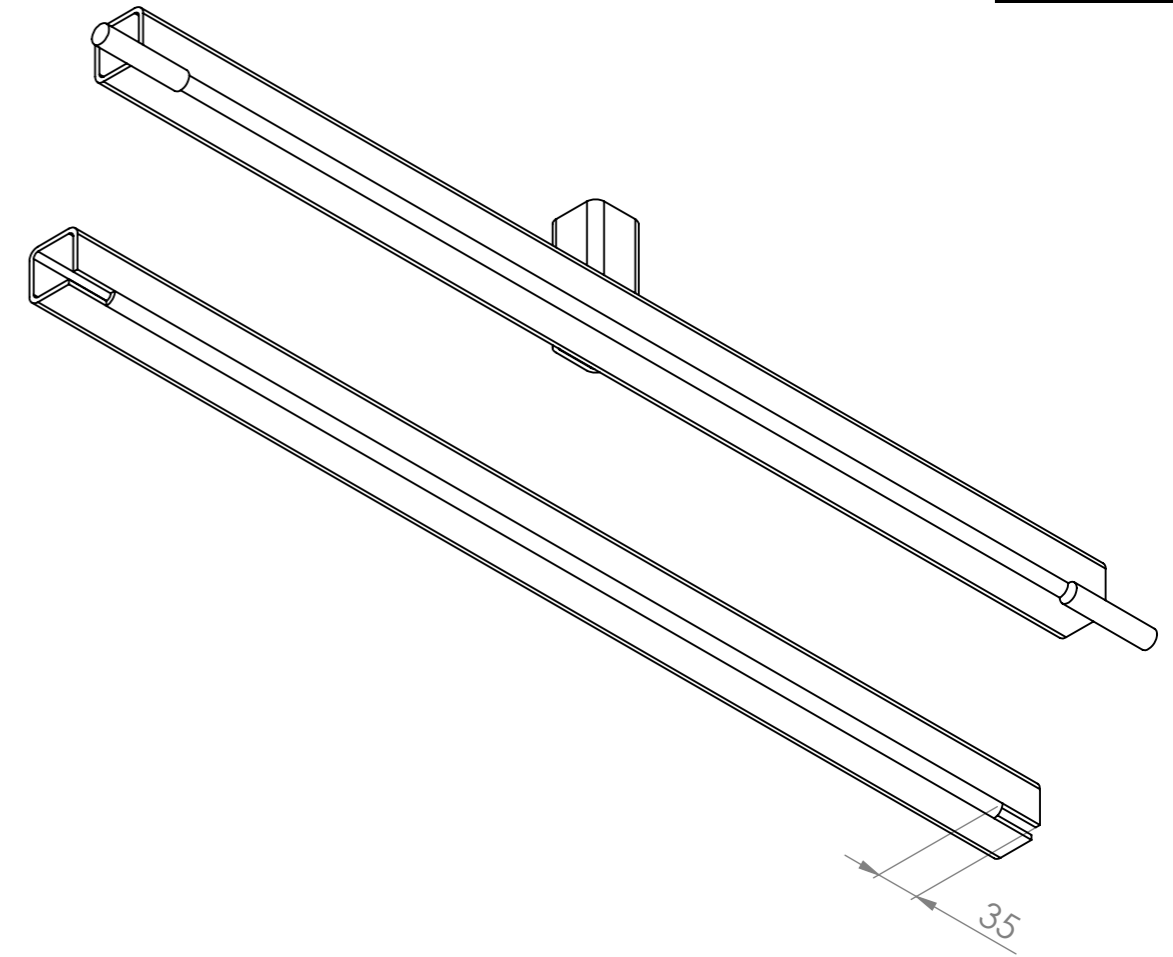
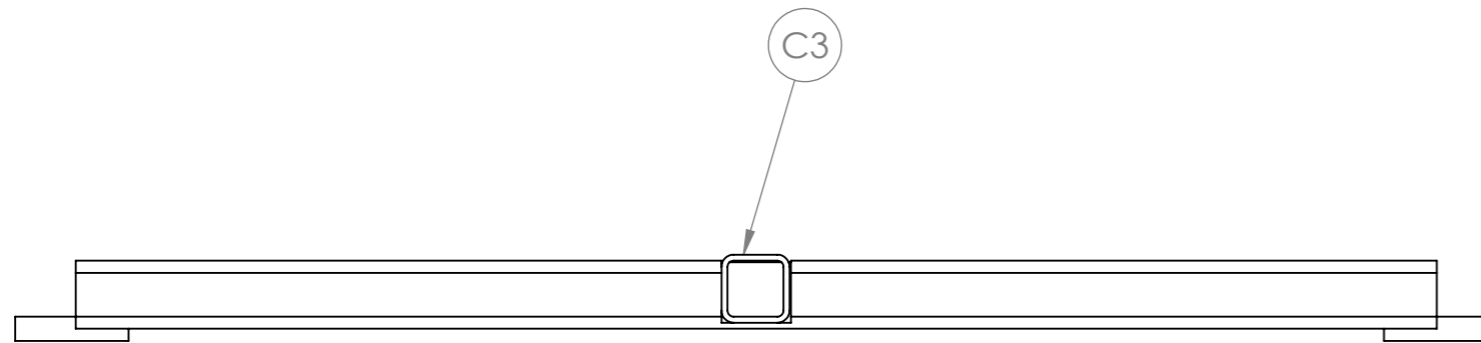
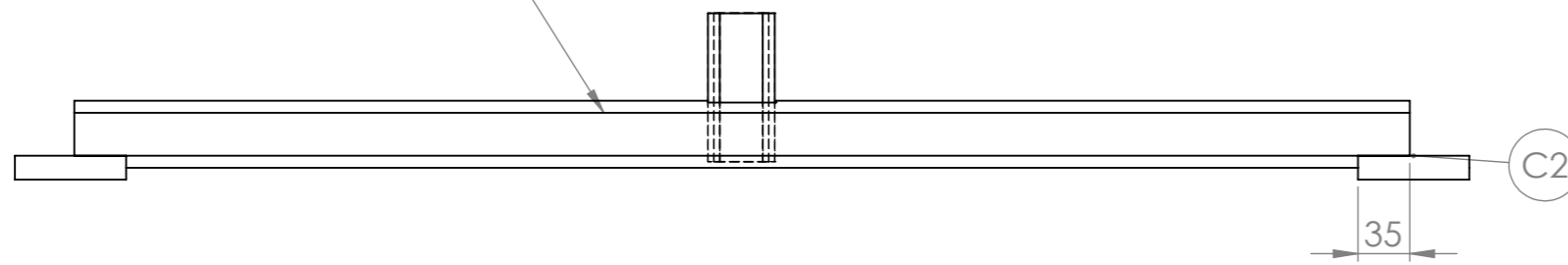
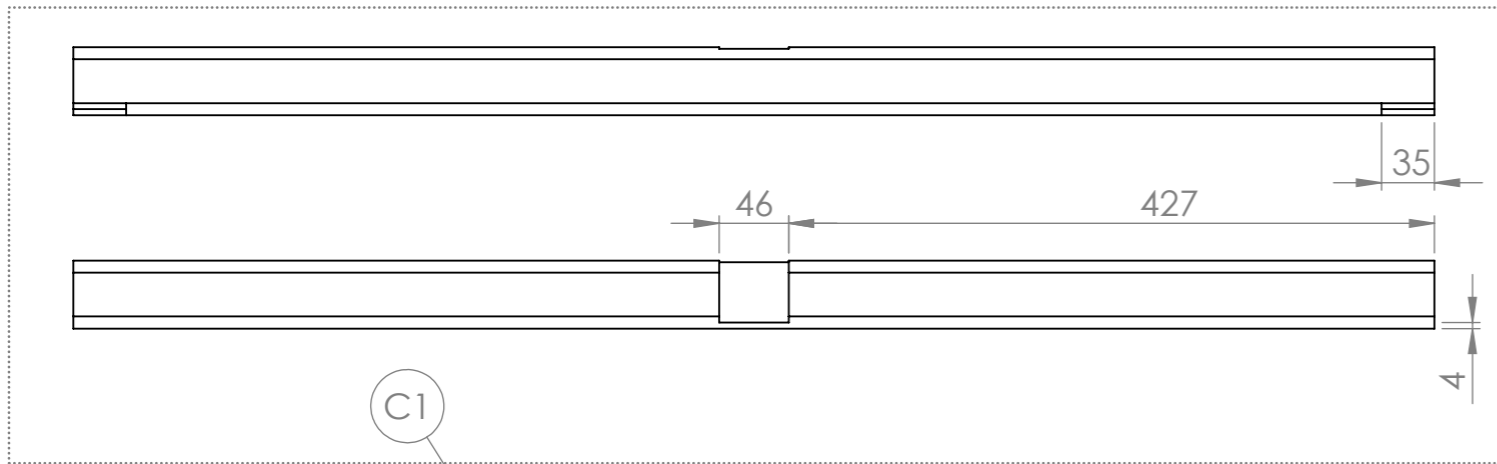


N°	Désignation	Longueur	Qté
B1	Fer plat 40 x 10	750	1



N°	Désignation	Longueur	Qté
D1	tube carré 35 x 4	150	1

Version	1.2	Qté	1	
Date	21/05/2015			
Outil	Plieuse			
Pièce	C - Levier de pliage			



DÉTAIL D  
ECHELLE 1 : 1

N°	Désignation	Longueur	Qté
C2	étiré rond Ø16	75	2
C1	tube carré 35 x 4	900	1
C3	tube carré 45 x 4	100	1